

IN THE CIRCUIT COURT OF THE
EIGHTEENTH JUDICIAL CIRCUIT,
IN AND FOR SEMINOLE COUNTY,
FLORIDA

ADMINISTRATIVE ORDER NO:
13-14-S AMENDED
SUPERSEDES 13-14-S

**IN RE: ADMINISTRATIVE RULES - ADMINISTRATIVE ORDER ESTABLISHING
DESIGNATED AREAS AND GUIDELINES FOR PUBLIC ASSEMBLY**

WHEREAS, pursuant to Article V, section 2(d) of the Florida constitution and section 43.26, Florida Statutes, the chief judge of each judicial circuit is charged with the authority and the power to do everything necessary to promote the prompt and efficient administration of justice; and

WHEREAS, pursuant to the chief judge's constitutional and statutory responsibility for administrative supervision of the courts within the circuit and to create and maintain an organization capable of effecting the efficient, prompt, and proper administration of justice for the citizens of the State, the chief judge is required to exercise direction, *see* Fla.R.Jud.Admin. 2.215(b)(2), (b)(3); and

WHEREAS, to ensure the safe and orderly use of court facilities, and to minimize activities which unreasonably disrupt, interrupt, and interfere with the fair and orderly conduct of court business, and the orderly and peaceable conduct of court business in a neutral forum free of actual or perceived partiality; and

WHEREAS, recent events in Seminole County, Florida, have sparked demonstrations and other expressive conduct on some of the grounds of the three (3) courthouses serving the courts in Seminole County, Florida, which if unrestricted can lead to interference with the ingress and egress of persons appearing in court at said courthouses for exercising their lawful rights and

WHEREAS, restriction upon expressive conduct and lawful assembly to express grievances outside of these courthouses is necessary to serve the State's compelling interest to allow unrestricted access to said courthouses, and

WHEREAS, any such restriction must be narrowly drawn to achieve that end; and

WHEREAS, such regulation is a proper exercise of the Court's inherent authority to take supervisory and administrative actions necessary to implement its judicial functions; and

WHEREAS, the power of courts to punish for contempt is of immemorial antiquity, and is inherent in all courts as a necessary power belonging to them in order to enable them to accomplish the

purposes for which they were designed; that is, the orderly trial and decision of causes, the enforcement of public order, the prevention of interferences with their proceedings, and the enforcement of the due respect belonging to them as institutions of the country;

WHEREAS, further evaluation has demonstrated the need to specify items prohibited at the Seminole County Criminal Justice Center since the entry of the prior order establishing the restrictive areas;

NOW THEREFORE, I, Alan A. Dickey, in order to facilitate the efficient administration of justice, pursuant to the authority vested in me as Chief Judge of the Eighteenth Judicial Circuit of Florida under Florida Rule of Judicial Administration 2.215, hereby order the following, effective **immediately**, and to continue until further order:

1. Any person seeking to engage in oral protest, display a sign to express his or her opinion as to any subject, or otherwise wishing to express an opinion on any subject, on the grounds of any of the courthouses in Seminole County, Florida shall be restricted to conducting such activity in the areas described in this order.
2. Under no circumstances shall anyone interfere with the rights of any other person to lawfully enter and leave any of the three (3) courthouses in Seminole County, Florida.
3. The areas within which all expressive conduct is restricted are as follows:
 - a. At the **Seminole County Criminal Justice Center**, 101 Bush Blvd., Sanford, Florida, 32773, the designated protest area is approximately 128' from the front door, within the grassy area beginning east of the fountain, continuing east toward the retention pond to (but not including) the paved circle drive, not to encroach on the thoroughfares in the parking lot or any parking spaces or any of the main entrance and exit doors to the building.

Each designated area will allow citizens to gather east to west in the grassy area along the tree line and up to the sidewalks, measuring one hundred and thirty feet in length, and will measure twenty five feet wide from the north to the south. There will be a forty foot buffer zone between the barricaded protest areas.

A designated media area will be located in the grassy areas east of (but not including) the paved circle drive continuing east towards Hwy 17-92, not to encroach on the thoroughfares in the parking lot or any parking spaces, measuring one hundred five feet east to west, and ninety fee north to south.
 - b. At the **Seminole County Juvenile Justice Center**, 190 Bush Blvd., Sanford, Florida, 32773, the designated protest area is the sidewalks along Bush Blvd. and the grassy area southeast of the Juvenile Justice Center between Bush Blvd. and fifteen (15) feet east of the main entrance of the Juvenile Justice Center not to include the parking lot.
 - c. At the **Seminole County Civil Courthouse**, 301 North Park Ave., Sanford, Florida, 32771, the designated protest area is the sidewalks along North Park Ave., East Seminole Blvd., and North Hood Ave. Protesters may not encroach on the walkways on the east and west main entry doors from the sidewalks to the building, or the reserved employee parking lot located on the south side of the building.
4. To ensure public safety, the following items are strictly prohibited on courthouse grounds: Weapons of any type, including firearms, fireworks and other explosive devices, bladed instruments, ammunition, batons/clubs, tasers/stun guns, chemical sprays, contraband, and any other hazardous materials. This restriction also prohibits weapons

and firearms on courthouse grounds carried by concealed weapons permit (CWP) holders. Other prohibited items (unless authorized by advance permit from Seminole County) include: musical speakers, loud speakers or sound amplifiers of any kind, chairs, coolers, backpacks, signage affixed to wood, piping or metal, tents or temporary structures, any type of vendor sales or service, alcoholic beverages, portable generators, cooking grills, open fires, or any other item deemed dangerous by the Sheriff's Office. Only pre-authorized vehicles with special permits issued by Seminole County are permitted to remain overnight. Prohibited items found on courthouse grounds may be confiscated by the Sheriff's Office. Non-permitted vehicles may be towed.

5. Persons assembling on courthouse grounds may be subject to a physical search of their person and handheld possessions. Handheld possessions include, but are not limited to, bags, purses, wallets, wheelchairs, carriages, strollers, electronic devices, briefcases, packages, etc. Persons refusing to be searched may be denied access to courthouse grounds, including the Public Assembly Zone.
6. Law enforcement is authorized to separate any demonstrators with conflicting points of view to different parts of the designated area. Law enforcement is also authorized to alter the buffer zones between persons assembled to reduce crowding and create a safer environment. Law enforcement is further authorized to temporarily disband persons assembled on courthouse grounds should public safety be threatened.
7. The Seminole County Sheriff's Office, Sanford Police Department, or any other law enforcement agency designated by the Seminole County Sheriff is authorized to advise anyone in possession of prohibited items or assembled in any area on courthouse grounds other than designated herein, to cease and desist and provide to those persons a copy of this order. Any person continuing in prohibited activity after having been provided a copy of this order and being instructed to cease and desist by law enforcement may face indirect civil contempt of court proceedings. If found in contempt of court, penalties include confinement, fine or both.

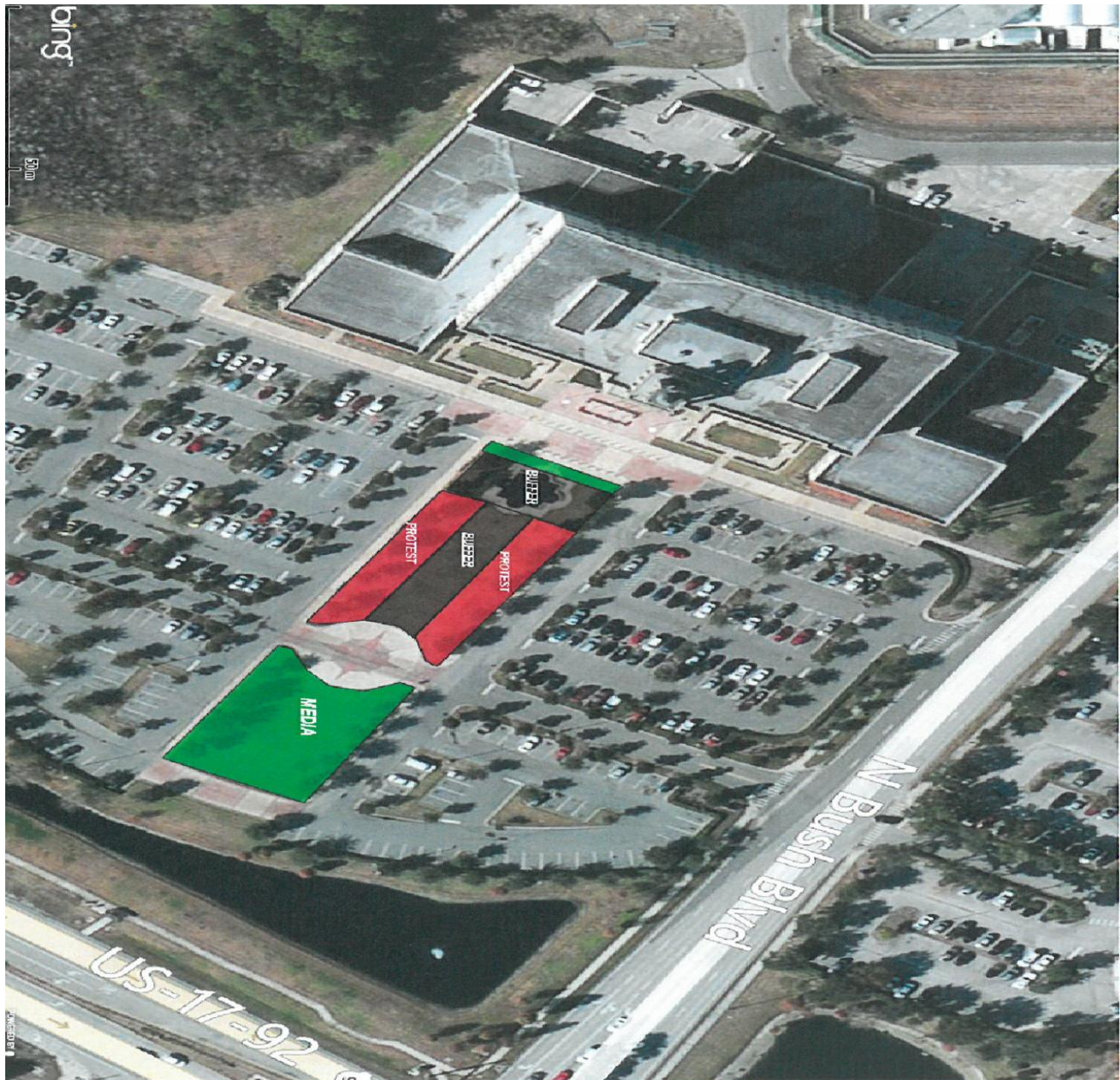
DONE and ORDERED this 13th day of May, 2013.

ALAN A. DICKEY
ALAN A. DICKEY
CHIEF JUDGE

Distribution:

All Circuit and County Court Judges (Seminole County)
Court Administration (Brevard & Seminole County)
Clerk of Court (Seminole County)
State Attorney (Seminole County)
Public Defender (Seminole County)
Sheriff (Seminole County)
Bar Association (Seminole County)
Law Library (Seminole County)

CRIMINAL JUSTICE CENTER
101 Bush Boulevard, Sanford, FL 32773

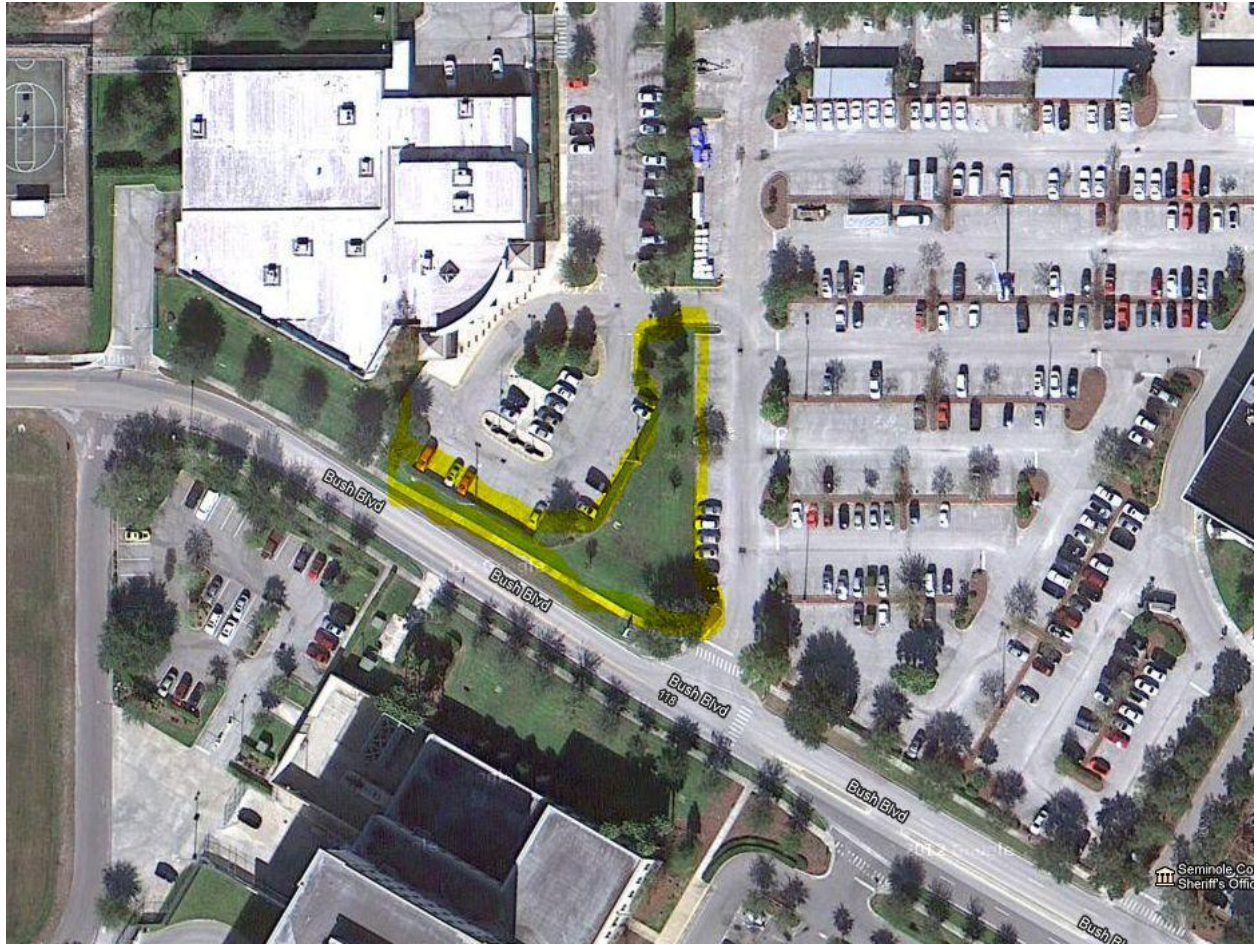


The designated protest area is approximately 128' from the front door, within the grassy area beginning east of the fountain, continuing east toward the retention pond to (but not including) the paved circle drive, not to encroach on the thoroughfares in the parking lot or any parking spaces or any of the main entrance and exit doors to the building.

Each designated area will allow citizens to gather east to west in the grassy area along the tree line and up to the sidewalks, measuring one hundred and thirty feet in length, and will measure twenty five feet wide from the north to the south. There will be a forty foot buffer zone between the barricaded protest areas.

A designated media area will be located in the grassy areas east of (but not including) the paved circle drive continuing east towards Hwy 17-92, not to encroach on the thoroughfares in the parking lot or any parking spaces, measuring one hundred five feet east to west, and ninety feet north to south.

**Juvenile Justice Center
190 Bush Boulevard, Sanford, FL 32773**



The designated protest area will be the sidewalks along Bush Boulevard and the grassy area southeast of JJC, in-between Bush Boulevard and the main entrance of JJC and 15 feet east of the main entrance of the JJC not to include the parking lot.

Civil Courthouse
301 N. Park Avenue, Sanford, FL 32771



The designated protest area will be the sidewalks along North Park Avenue, East Seminole Boulevard, and North Hood Avenue. Protesters should not encroach on the walkways on the east and west main entry doors from the sidewalk to the building, or the reserved employee parking lot located on the south side of the building